

RE-ENCHANTING VILLA MEDICI

APPENDIX 1 – DESCRIPTION OF THE SPACES

**Call for projects for the refurbishment of two spaces
of Villa Medici
(Studio 5bis and Studiolo 26)**

DESCRIPTION OF STUDIO 5BIS

Location within Villa Medici estate

Studio 5bis is located in the buildings backing onto the northern boundary wall of Villa Medici, which forms a shared boundary with the Villa Borghese park. Whilst the construction of this wall and the first buildings dates back to the 16th century, the use of this space has undergone significant functional changes over time.

Originally used for growing fruit trees, this area of the estate, protected by two walls, was probably repurposed in the 18th century for domestic use, with the small courtyard and the single-storey building serving as a place to hang out the washing. It was not until the second half of the 19th century that the building is thought to have gained in height through the addition of storeys. The first floor, with its large north-east-facing window, then served as a workshop.

With its understated aesthetic and utilitarian character, this architectural ensemble stands in stark contrast to the Renaissance splendour of Villa's main building. This everyday architecture, with its modest proportions, reflects a geometry dictated by the site's constraints, nestled between the centuries-old boundary wall and the layout of the historic gardens.

Today, these buildings mainly house studios and accommodation for fellows and other artists in residence at Villa Medici.

Studio 5bis is situated on the second floor of a three-levels building comprising two studios on the ground floor and another apartment on the first floor. It has a terrace with a view to the north over the Pincio and the Villa Borghese, to the south over the historic gardens and the main building of Villa Medici, and to the west over a courtyard situated between two studios. Access is via a spiral staircase reached through a door accessible from the historic gardens.

Aerial view of Villa Medici estate (Studio 5bis in red).



Interior description

Studio 5bis has a floor area of approximately 31m². It comprises an approximately 19-square-meter-main room, an approximately 2-square-meter-bathroom and an approximately 10-square-meter-terrace.

The ceiling height in the main room varies depending on the area in question. The height to the ridge beam in the main room is 3.62 m².

The west-facing French window leads onto the terrace. It is the only source of natural light in the main room. The bathroom is lit by a small high window.

The entire floor of Studio 5bis is laid with square terracotta tiles set at a 45° angle. The terrace floor is laid with rectangular terracotta tiles.

The walls of the studio are painted white and the skirting boards and joinery are blue.

The splashback in the kitchenette and the bathroom walls are covered in white ceramic tiles.

Furniture in the main room (19m²):

- Kitchenette comprising base and wall units, a laminate worktop, a stainless steel sink and tap, and two built-in electric hobs;
- A large fridge;
- A microwave;
- A coffee machine;
- A double bed (standard size 160cm × 200cm);
- Two bedside tables;
- An armchair;
- A wardrobe;
- A desk;
- Two wooden chairs;
- A floor lamp;
- Two wall lights;
- A cast-iron radiator.

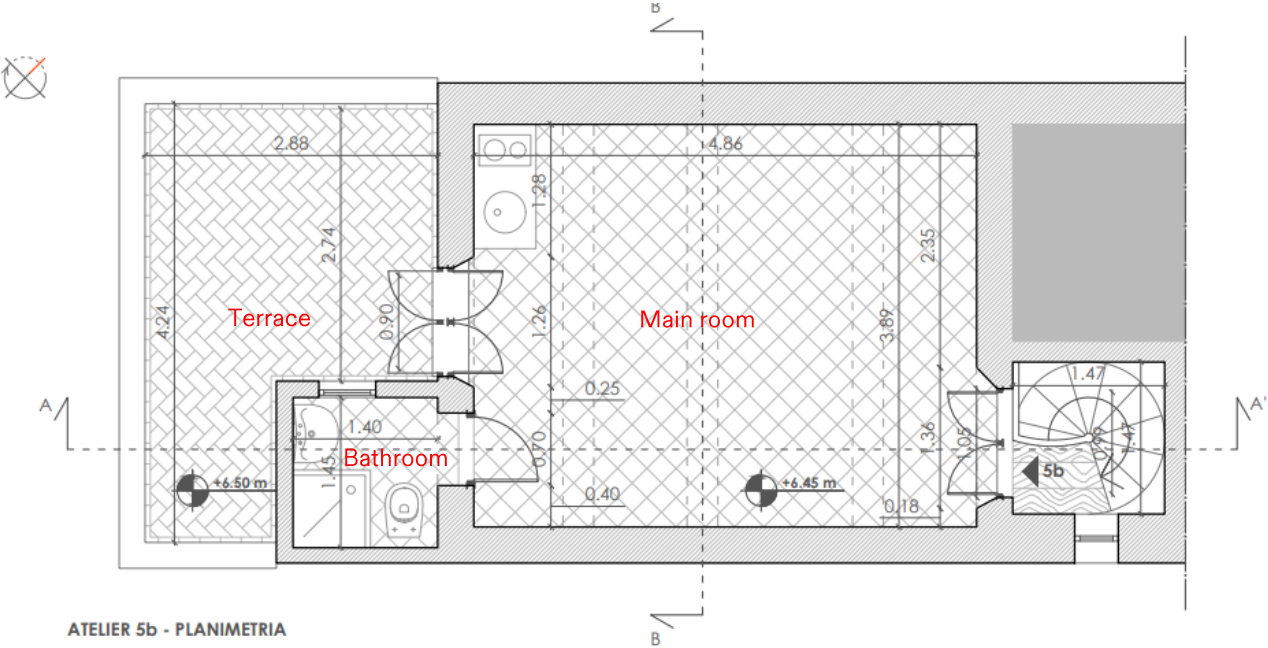
Furnishings in the bathroom (2m²):

- A shower cubicle with a raised ceramic tray;
- A floor-mounted toilet;
- A washbasin;
- A mirror above the washbasin;
- Open storage space beneath the washbasin;
- A towel rail;
- A wall light above the mirror.

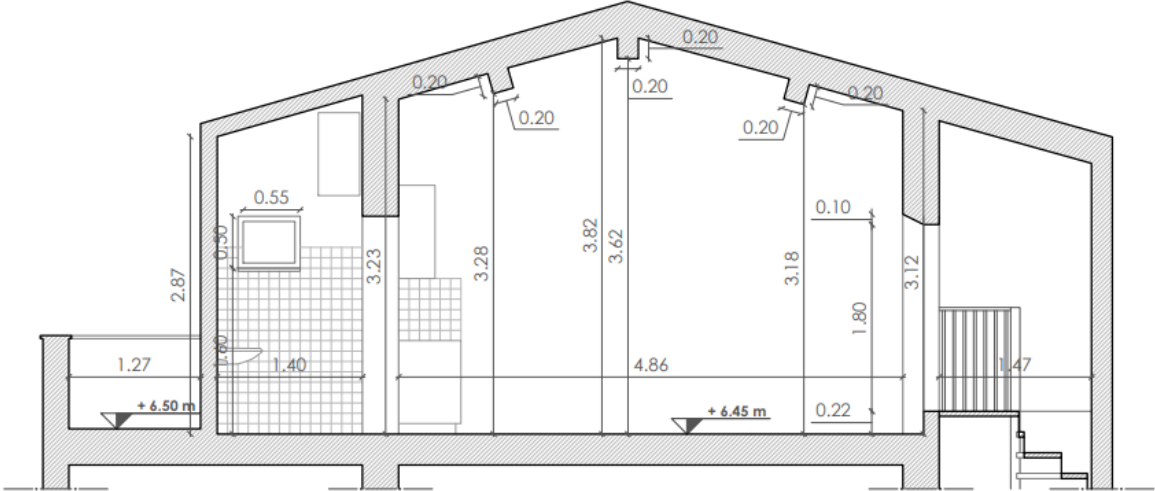
Furniture on the terrace (10m²):

- A table;
- Two wooden chairs;
- Two outdoor armchairs;
- A wall light.

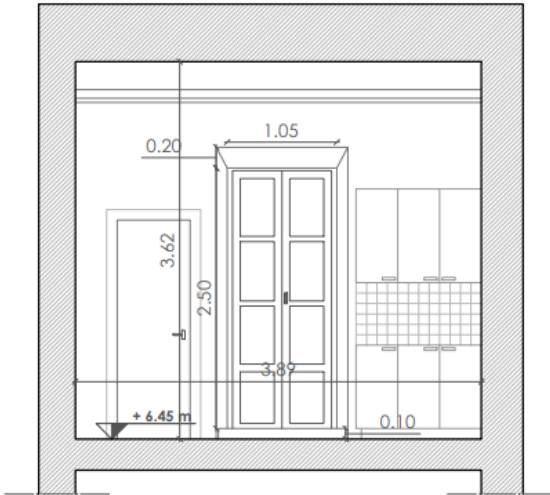
Plan and longitudinal and cross-sectional views of Studio 5bis.



ATELIER 5b - PLANIMETRIA



ATELIER 5b - SEZIONE A-A'



ATELIER 5b - SEZIONE B-B'

Photo of Studio 5bis taken from the French window.



Photo of Studio 5bis taken from the front door.



Photo of the bathroom in Studio 5bis.



Photo of the view of Villa Medici gardens from the terrace of Studio 5bis.



DESCRIPTION OF STUDIOLO 26

Location within Villa Medici estate

Studiolo 26 is divided into two independent studios: Studio 26a and Studio 26b.

Studios 26a and 26b are part of the building's original layout, which dates back to the 16th century.

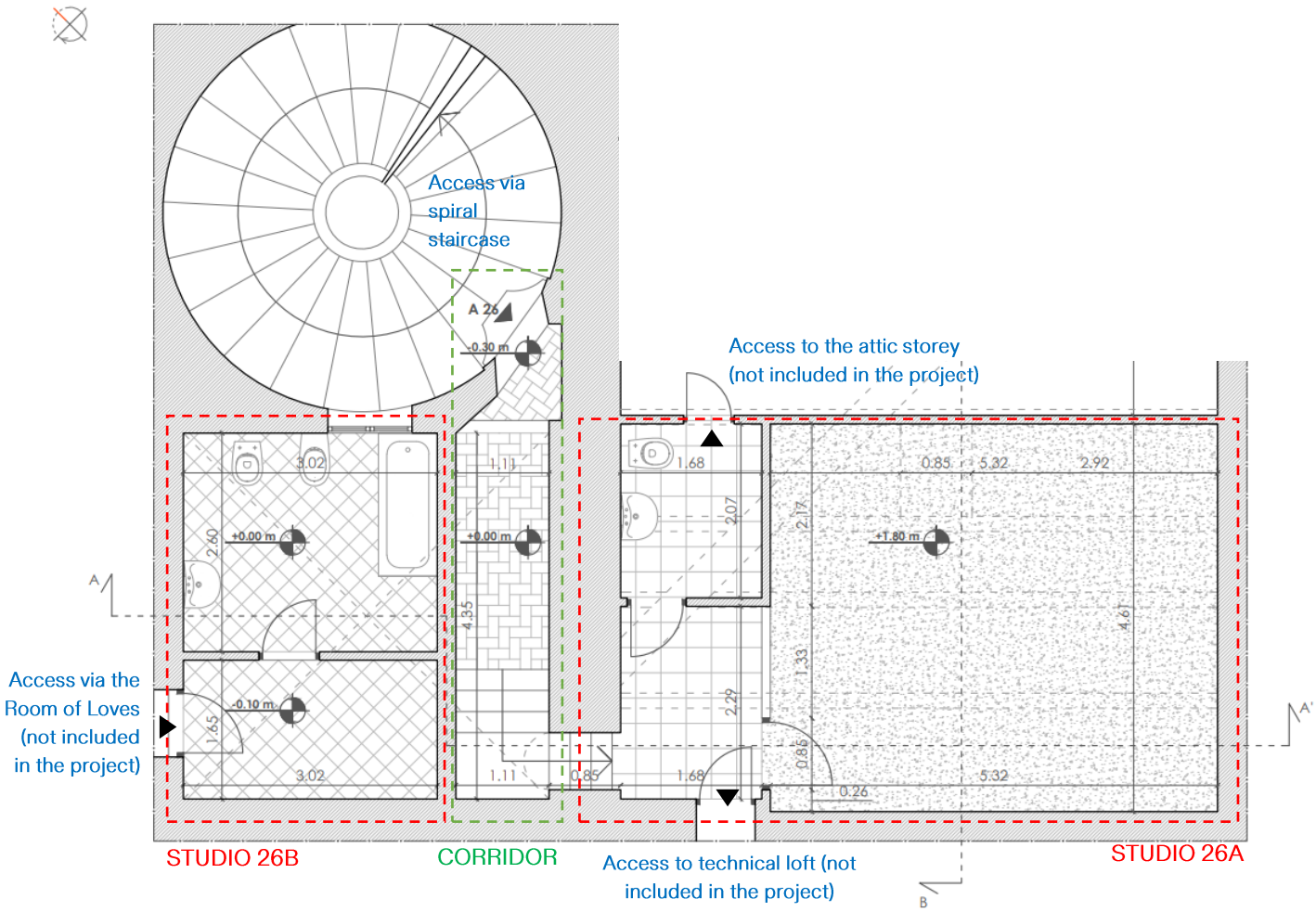
Studio 26a is situated within the attic storey. This mansard-roofed room would likely have served, over the centuries, as additional accommodation or storage space. Indeed, although historical sources remain silent regarding its original purpose, the spatial layout suggests a domestic and utilitarian function, set apart from the reception areas.

More recently, Studio 26a served as a storage area for some of Villa Medici's digital equipment, before this function was recently transferred to new premises, thereby freeing up the space for its current reinvention.

Studio 26b adjoins the historic apartments, and more specifically the Room of Loves. Historical sources do not document its use. It is now fitted out as a bathroom and cloakroom and serves as a storage area for equipment used in the upkeep of Villa Medici.

At present, Studios 26a and 26b are not connected. Studio 26a is accessed via a corridor reached by the spiral staircase in the South Tower. Studio 26b is accessible only via the Room of Loves, which is also reached by the spiral staircase in the South Tower.

Plan of Studiolo 26.



Interior description

1. Studio 26a

Studio 26a has a floor area of approximately 38m². It comprises an approximately 5-meter-square-entrance hall, an approximately 29-meter-square-main room (including a landing) and an approximately 4-meter-square-bathroom.

The entrance hall comprises a hallway with stairs leading to the landing. This landing leads to the main room and the current bathroom, as well as a technical loft accessible via a fire door.

The ceiling height varies depending on the room.

Studio 26a features a dormer window overlooking the Piazzale of Villa Medici. It is the room's sole source of natural light.

The floor of the hallway in the entrance consists of original terracotta tiles and a wooden banister. The landing floor consists of terracotta tiles that are not original. The floor of the main room consists of a screed, and that of the bathroom consists of terracotta tiles that are not original.

The main room is separated from the entrance by a partially glazed partition. Furthermore, as Studio 26a is located in the attic storey, exposed beams are visible in the entrance, the main room and the bathroom.

Finally, Studio 26a serves as a passageway for a number of visible, unencased utility lines and technical installations. A utility room housing these utility lines is accessible via a fire door located on the landing. A door in the bathroom also provides access to the roof void.

Technical elements and fixtures in the entrance hall (5m²):

- Technical services running overhead;
- A fire extinguisher;
- Enclosures to conceal technical elements;
- A service hatch;
- An electricity meter;
- A wooden staircase;
- A wall light.

Technical elements and furnishings in the main room (29m²):

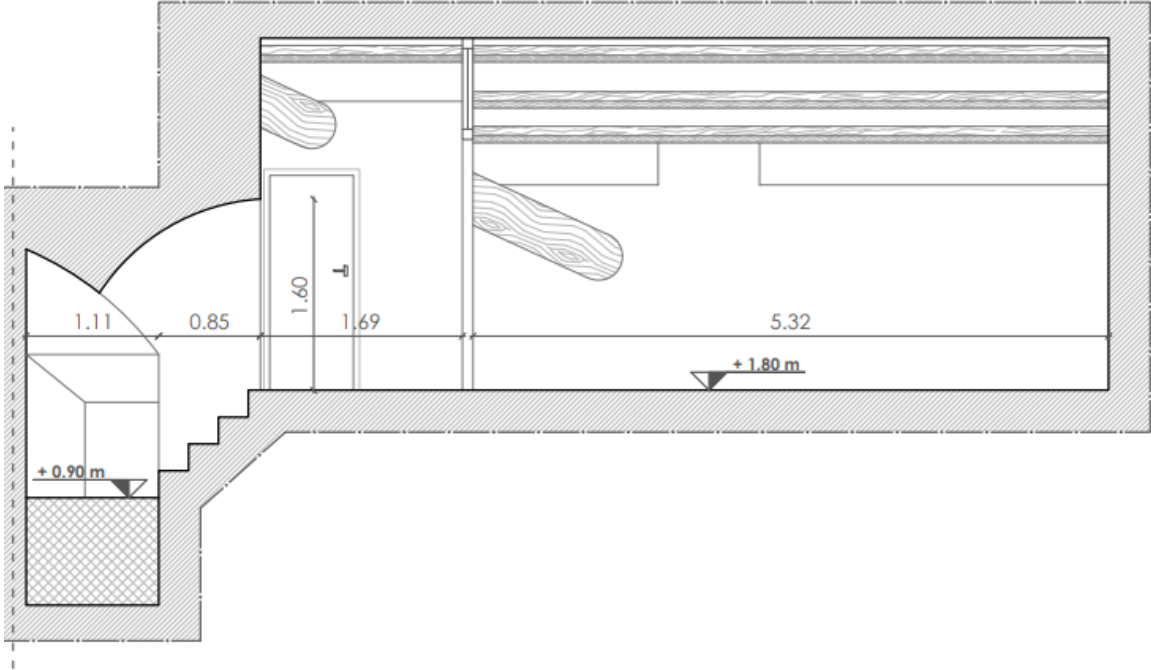
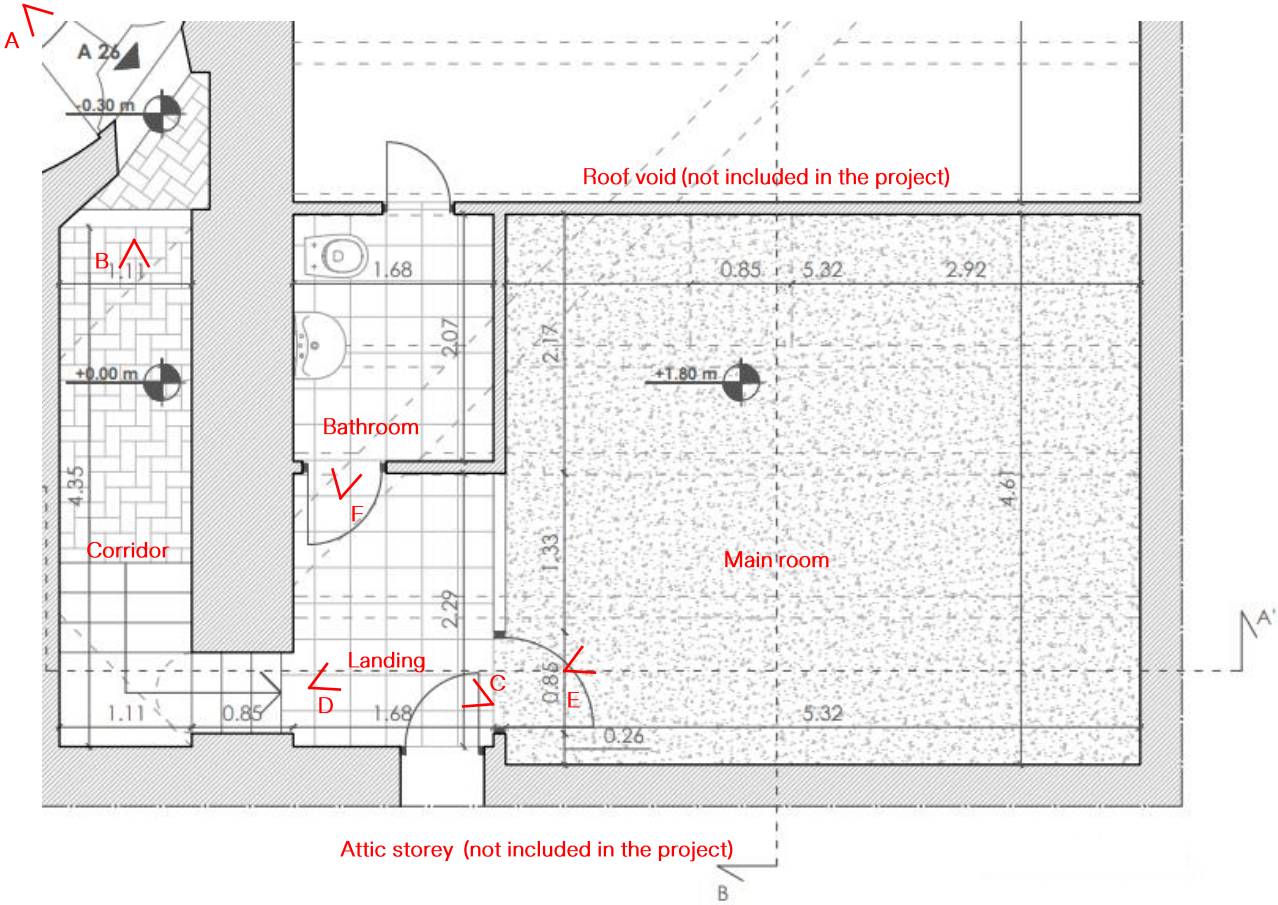
- A fire door leading to the technical loft;
- A glass partition;
- A dormer window;
- A desk;
- A throne;
- A single bed;
- A bedside table;
- An armchair;
- Electrical conduits;
- Technical services integrated into ceiling-mounted ducts;

- Two electricity meters;
- A badge reader providing access to the room;
- A push-button to activate the fire alarm;
- Three wall lights (including one on the landing);
- A cast-iron radiator.

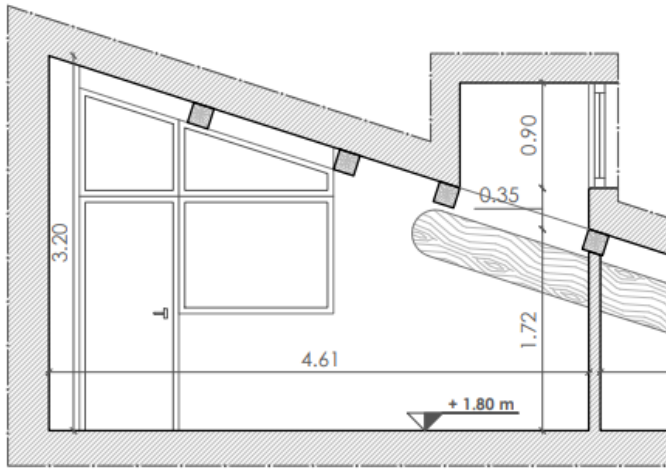
Technical features and fixtures in the bathroom (4m²):

- A door leading to the loft;
- A floor-mounted toilet;
- A washbasin;
- A mirror above the washbasin;
- Bathroom accessories (a towel rail, a cup holder, a soap dish);
- A wall light above the mirror;
- A cast-iron radiator.

Plan and longitudinal and cross-sectional views of Studio 26a.



AMBIENTE 26 - SEZIONE A-A'



AMBIENTE 26 - SEZIONE B-B'

Photos A and B : corridor leading to Studio 26a from the spiral staircase.



Photos C and D : landing in Studio 26a.



Photo E : main room in Studio 26a.



Photo F : bathroom in Studio 26a.



2. Studio 26b

Studio 26b has a floor area of approximately 13m². It comprises an 8-meter-square-bathroom and an approximately 5-meter-square-cloakroom.

Studio 26b is currently accessible via a door connecting to the historic apartments of Villa Medici, and more specifically via a small staircase located in the Room of Loves. Studio 26b is currently fitted out as a bathroom and a cloakroom and serves as a storage space.

The distinctive feature of Studio 26b is the presence of a vaulted ceiling, which also covers the ceiling of the adjoining corridor. At present, a wall divides the space beneath the vault into two. Another partition separates the overall space of Studio 26b into two areas: a bathroom and a cloakroom.

There is a difference in height between the bathroom floor and the cloakroom floor: the cloakroom floor is 10cm lower.

The bathroom floor is laid with blue tiles and the cloakroom floor with terracotta tiles.

Finally, Studio 26b has a translucent window overlooking the spiral staircase of the South Tower. It does not currently have a ventilation system.

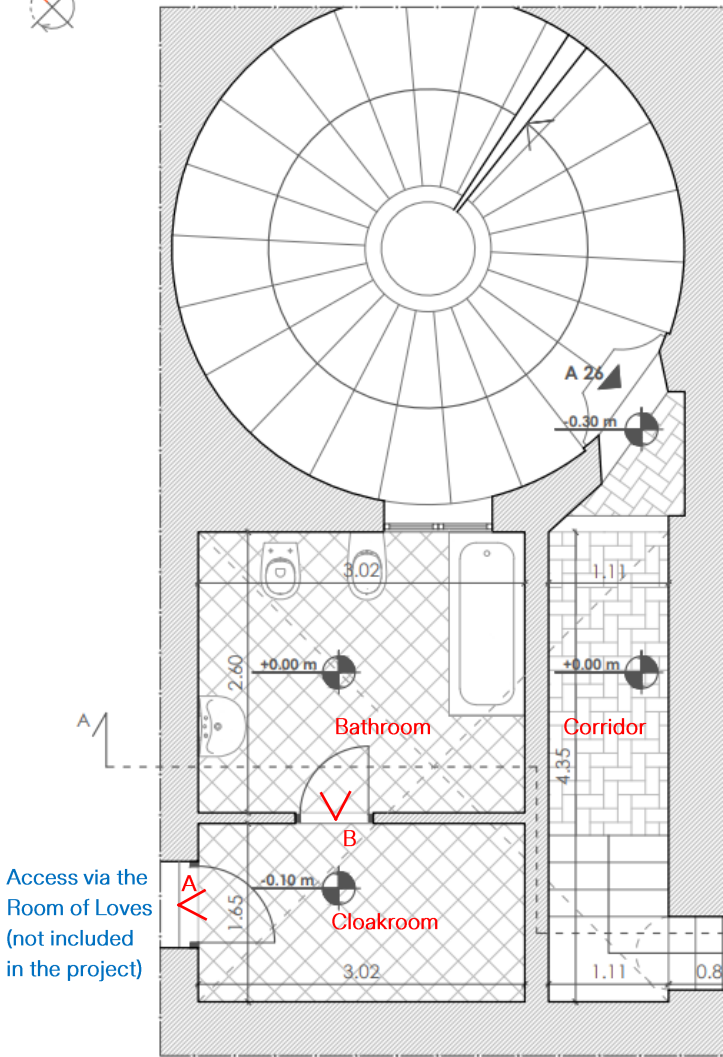
Technical features and fixtures in the bathroom (8 m²):

- A translucent window;
- A floor-mounted toilet;
- A bidet;
- A bathtub;
- A washbasin;
- A mirror above the washbasin;
- Bathroom accessories (two towel rails, two cup holders, two soap dishes);
- A wall light above the mirror;
- A fire extinguisher;
- A radiator.

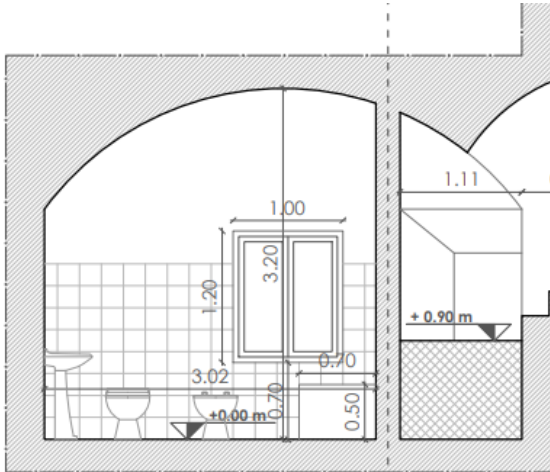
Technical features and fittings in the cloakroom (5 m²):

- A large cupboard against the wall separating the cloakroom from the hallway;
- A hatch above the cupboard;
- Two pipes running along the ceiling.

Plan and cross-section of Studio 26b.



Access via the Room of Loves (not included in the project)



AMBIENTE 26 - SEZIONE A-A'

Photo A : current cloakroom in Studio 26b.



Photo B : current bathroom in Studio 26b.



VILLA MEDICI

**ACADÉMIE DE
FRANCE À ROME**