

RE-ENCHANTING VILLA MEDICI

APPENDIX 1 - DESCRIPTION OF THE PAVILIONS

**Call for projects for the interior design and creation of a line of
furniture for the fellows' pavilions**

VILLA MEDICI

**ACADÉMIE DE
FRANCE À ROME**

1. General description of the layout of the pavilions and gardens

The pavilions covered by this call for projects were designed by architect Jacques Carlu in 1954 and are intended to accommodate fellows of the Villa Medici for one year.

The pavilions are located on the grounds of the Villa Medici, near the Porta Pinciana entrance in the area known as "Braccheria."

The entire project runs parallel to the Aurelian Wall to the west, the ancient enclosure of the villa in Rome, and parallel to the straight road leading from Porta Pinciana to the Porta Vignola gate. Each pavilion is located perpendicular to the Aurelian Wall and the road leading to Porta Pinciana. The alternation of full and empty spaces provides each pavilion with a private outdoor area that extends to the wall of the previous pavilion. The pavilions are accessed from the internal road, which is accessible by car, running from Porta Pinciana to the gate of the orange tree alley. This road is 30 cm lower than the ground level of the pavilion and lined with umbrella pines. A low wall separates the space used by staff and residents of the Villa from the private space of the pavilion. Parallel to this road, at the rear of the pavilions, is an alleyway accessible only to the residents of the pavilions. This 3.30 m wide alley is bordered by a low retaining wall topped with a hedge of bay laurel. The alley leads to a dry stone basin. Gaps in the laurel hedge allow the ancient ramparts to be seen from the pavilions. Parallel to the alleyway, a footpath for use by the Villa's staff and residents is located 1 m above the level of the pavilions. This path is lined with umbrella pines on both sides and offers a green space whose irregular geometry is delimited by the Aurelian Wall.

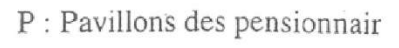
The repetition of the pavilion typology results in distinctive features at both ends. The first pavilion on the Porta Pinciana side has a garden that is not delimited by the wall of a previous pavilion. The other end consists of a pavilion known as the "end pavilion," which was designed to complete the repetition system and therefore has different typologies. Furthermore, this end pavilion has undergone several significant modifications over time. As a result, we can distinguish between pavilions "A-B-C-D-E-F," which are of the same type as end pavilions "G-H-I."

2. Description of the use of pavilions and gardens

The pavilions are intended to house fellows who stay at Villa Medici for one year (see Article 1.2: Purpose and procedure of the call for projects). During their residency, fellows are invited to pursue their research and/or creative work in a variety of disciplines: visual arts, writing, musical composition, cinema, architecture, performance, painting, and art history and theory.

Fellows may live alone, as a couple, or as a family with children in these pavilions. They may occasionally host guests, particularly collaborators.

Each fellow also has a studio in which to develop their artistic practice. However, depending on the nature of their practice (research, writing, drawing or painting, video editing, etc.), they may choose to work in their pavilion on a more or less regular basis. Their spouse and/or occasional collaborators may also use the pavilion as a workspace. As a result, the spaces can be used for several purposes at the same time.



RdC

RdC

RdC

View of the pavilions from the road leading to Porta Pinciana



View of the pavilions from the road leading to Porta Pinciana



View of the Aurelian Wall, the footpath, and the pavilions



View of the alleyway from Pavilion A



View of the alleyway from the end pavilion



3. Description of the common features of pavilions "A-B-C-D-E-F-G "

The pavilion consists of a single level opening onto a garden:

- Living area: 65 m²;
- Garden area (not including paths and alley): 43 m².

Pavilions A to G are of the same type. However, they have the following variations:

- **For four pavilions (A/C/E/G)** : the loggia has three French windows and the fireplace is located in the center of the west gable wall;
- **For 3 pavilions (B/D/F)** : the loggia consists of two French windows, plus a 1.12 m deep niche with a stone screen on the outside. The niche has a 93 cm high base. In addition, the fireplace is located in the recess of the south wall;
- **For 1 pavilion (G)** : Pavilion G is part of the end pavilion (pavilions G/H/I). As a result, its layout differs significantly from the other pavilions: laundry room adjoining the kitchen, covered porch, no natural light in the kitchen.

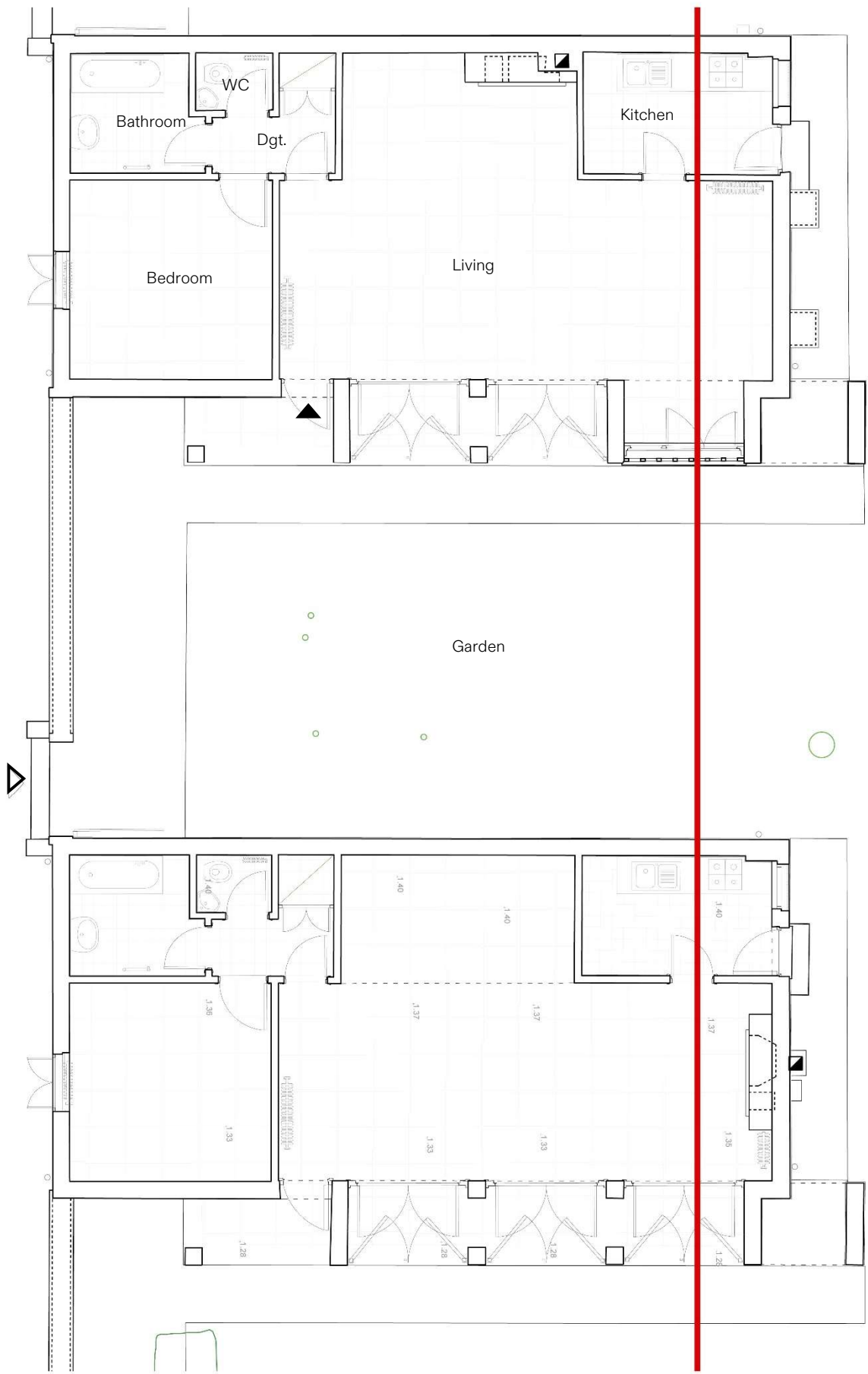
Special features of pavilions D and G

- Pavilion D: The flooring in the living room and bedroom is not original.
- Pavilion G: The flooring in the living room and bedroom is original, but the strips are green rather than red. The pavilion does not have high windows in the kitchen. The pavilion has a laundry room adjoining the kitchen.

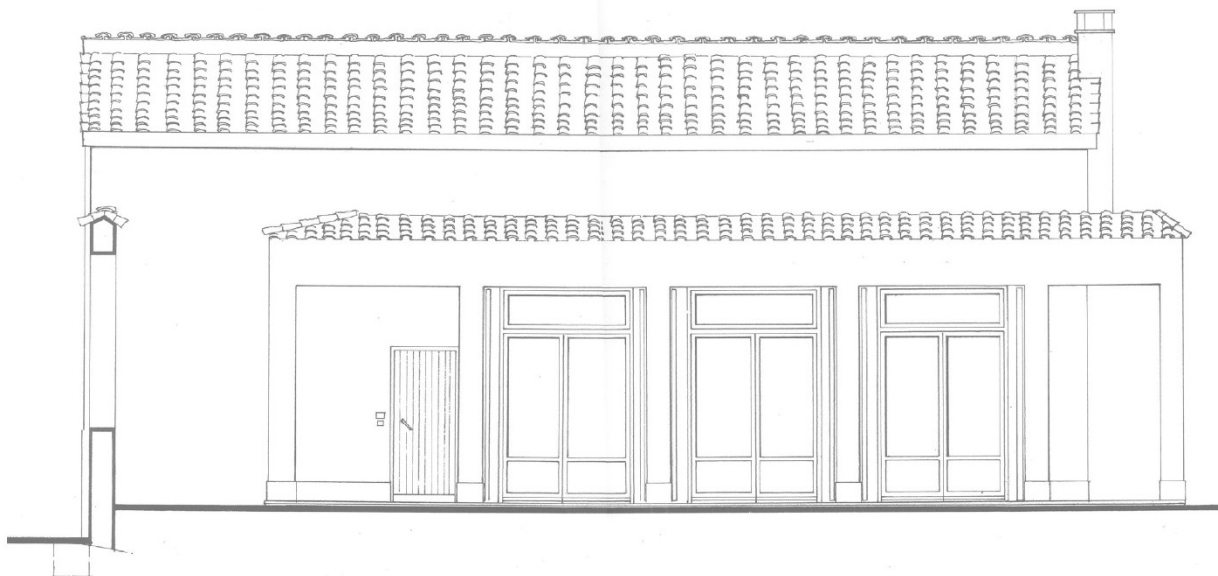
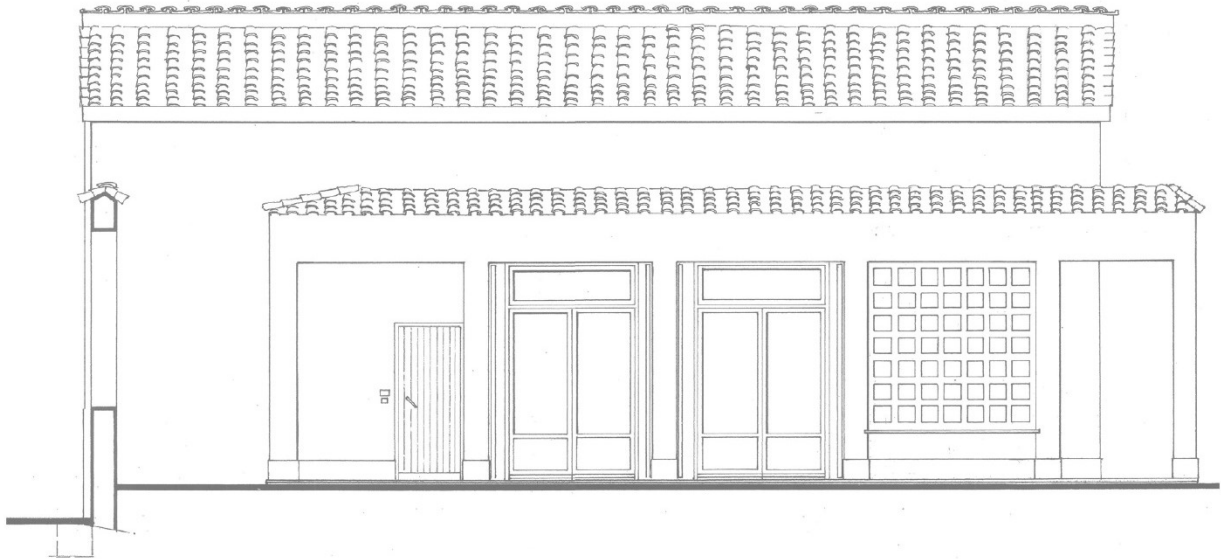
The following elements are taken from the original Jacques Carlu project and are to be retained:

- Exteriors:
 - The perimeter walls;
 - The entrance doors;
 - The travertine screen.
- Interiors:
 - Ceiling height;
 - The layout of the rooms, except for the kitchen, which has been opened up to accommodate a laundry room;
 - The interior partitions;
 - The doors, interior frames, and handles. The interior doors are made of wood and have a frame height of 2.20 m;
 - The flooring in the living room and bedroom and the thresholds of the interior doors;
 - The fireplace is 2.00 m long, 0.40 m wide and 1.15 m high. It is made of travertine veneer and brick laid on edge to form the outline and interior of the hearth. The fireplaces are used by the residents.
 - Cast iron radiators.

Floor plan of the pavilion with three French windows and a trellis.
Plan of the pavilion with two French windows.
Survey 2025. Scale 1:100.



North elevation of the pavilion with three French windows and a trellis.
North elevation of the pavilion with two French windows.
Surveyed in 2002. Scale 1:100.



Pavilion with three French windows and a trellis – North facade



© MOLAJOI

Pavilion with two French windows – North facade



© MOLAJOI

Living room

- Use: entrance hall, workspace, living room, dining room, bedroom.
- Surface area: 38 m²
- Main dimensions: length 8.60 m / width 3.40 m / recess 2.40 m wide and 4 m long / ceiling height 3.80 m.
- Flooring: The floor is original, consisting of white cement tiles with 20x20 cm marble granules framed by red terrazzo strips. The interior door thresholds are finished with original marble elements.
- Wall and ceiling coverings: The horizontal and vertical walls are painted white. The baseboards and door frames are darker colors, which vary depending on the pavilion.
- Natural lighting: A north-facing loggia on the same level as the garden, with three French doors measuring 1.80 m wide and 2.80 m high. The French doors consist of two glass panels with French-style opening and a tilt-and-turn glass transom. Each French door has a curtain rod and a pair of curtains. The loggia is 1.40 m deep. The ceiling height of the loggia is 2.96 m. Green-painted wooden shutters are located on the outside of the portico posts and can be folded down 90° inside the loggia in line with the posts. They block out light and views and combine the main room and the loggia into a single space.
- Artificial lighting: The current lighting consists of two suspended light fixtures aligned and centered in the room. In some pavilions, light fixtures have been added with exposed power supplies following this configuration: two simple wall sconces to the left of the entrance and two others in the recess. In general, each pavilion has several floor lamps or additional lamps in the main room.
- Furniture: The current furniture in the main room is sometimes from the Villa's collections, such as the Mallet-Stevens chairs or the wooden chests of drawers, wardrobe, and china cabinets.
Most of the furniture has been purchased recently.
The living room of each pavilion contains:
 - a desk with a chair;
 - a dining table with 4 to 6 chairs;
 - one or two bookcases;
 - a sofa;
 - an armchair;
 - a coffee table;
 - a wardrobe/chest of drawers/dish cabinet.
- Technical elements to consider:
 - There are two cast iron radiators in the room. The larger radiator is located along the partition wall in line with the entrance, while the smaller one is located either to the left of the fireplace in the configuration without an alcove, or to the left of the kitchen door in the configuration with an alcove.
 - A landline telephone connecting to the gatehouse is located in the living room, with the telephone jack located in the recess on the hallway side.

Pavilion A – Living room



© MOLAJOLI



© MOLAJOLI

Pavilion B – Living room



© MOLAJOLI



© MOLAJOLI

Kitchen

- Use: meal preparation, entrance from the living room and door to the outside alley.
- Surface area: 6.60 m²
- Main dimensions: length 3.30 m / ceiling height 3.80 m.
- Flooring: The floor is composed of blue-gray tiles.
- Wall and ceiling coverings: White ceramic tiles extend from the floor to the top of the door frame on all kitchen walls. The rest of the vertical and horizontal walls are painted white.
- Natural lighting: Two tall tilt-and-turn windows, one facing south and one facing west.
- Artificial lighting: One light fixture suspended from the ceiling.
- Furnishings:
 - low and high storage units with light blue Formica veneer;
 - a 4-burner gas stove;
 - an electric and gas oven;
 - a hood built into the wall cabinet;
 - a sink with integrated drainer;
 - a medium-sized refrigerator;
 - One countertop is laminate;
 - two coat hooks are fixed to the wall on the refrigerator side and another above the worktop;
 - A side table in some pavilions;
 - Additional low storage units in some pavilions.
- Technical elements to take into account:
 - The gas supply valve is located to the left of the door leading outside;
 - A ventilation grille on the ceiling;
 - A technical hatch is located in the false ceiling of the kitchen.

Pavilion A – Kitchen



© MOLAJOLI

Hallway

- Use: access to bathroom, toilet, and bedroom. Built-in closet with a depth of 85 cm and full height.
- Surface area: approximately 2 m².
- Main dimensions: ceiling height 3.80 m.
- Flooring: The floor is composed of black tiles with light-colored grout.
- Wall and ceiling coverings: The vertical and horizontal walls are painted white.
- Natural lighting: no natural lighting.
- Artificial lighting: One ceiling light.
- Technical elements to consider:
 - The electric meter.
 - The Wi-Fi terminal.

Toilet

- Surface area: 1.30 m².
- Main dimensions: ceiling height of 3.80 m.
- Flooring: The floor is composed of black tiles with light-colored grout.
- Wall and ceiling coverings: White ceramic tiles extend from the floor to a height of 2.08 m, with a black and white patterned frieze crowning the wall covering. The rest of the vertical and horizontal walls are painted white.
- Natural lighting: a high tilt-and-turn window on the south wall.
- Artificial lighting: One ceiling lamp.
- Furnishings:
 - Floor-mounted toilet with high flush;
 - Corner washbasin.
- Technical elements to consider:
 - One radiator;
 - High-mounted hot water tank.

Pavilion A – Hallway



© MOLAJOLI

Bathroom

- Use: bathroom and laundry room.
- Surface area: 4.15 m².
- Main dimensions: ceiling height of 3.80 m.
- Flooring: The floor is composed of black tiles and light-colored grout.
- Wall and ceiling coverings: White ceramic tiles extend from the floor to a height of 2.08 m, with a black and white patterned frieze crowning the wall covering. The rest of the vertical and horizontal walls are painted white.
- Natural lighting: Two high tilt-and-turn windows on the south wall.
- Artificial lighting: One ceiling light and one wall light above the mirror.
- Furnishings:
 - 70 x 1.60 cm bathtub and a curtain rod;
 - Washing machine;
 - A wall-mounted ceramic sink;
 - One mirror;
 - A closet with a glass door;
 - A coat hook;
 - A hydraulic towel dryer.

Pavilion A – Bathroom



© MOLAJOI

Bedroom

- Use: bedroom with double beds and storage.
- Surface area: 12 m²
- Main dimensions: ceiling height of 3.80 m.
- Flooring: The floor is white cement tile with 20x20 cm marble granules framed by colored terrazzo strips.
- Wall and ceiling coverings: The horizontal and vertical walls are painted white. The baseboards and door frames are darker in color, varying depending on the pavilion.
- Natural lighting: a double-hung window facing west with a French opening.
- Artificial lighting:
 - One ceiling lamp;
 - Two bedside lamps.
- Furniture:
 - Bed 160 cm x 200 cm;
 - Chest of drawers and/or wardrobe from the Academy's Collections;
 - Two bedside tables.
- Technical elements to be taken into account:
 - A radiator under the window.

Pavilion A – Bedroom



© MOLAJOI

Garden

- Use: domestic space, clothes drying, outdoor dining, workspace, children's play area, firewood storage.
- Surface area: 43 m²
- Main dimensions: wall of the previous pavilion at 6.50 m. Footpath along the east facade 1 m wide.
- Flooring: Travertine walkway.
- Natural lighting: east-west exposure and south light reflected on the wall of the previous pavilion.
- Artificial lighting: Motion-detector wall light above the entrance door.
- Furniture: One wooden table and two benches.
- Plantings:
 - A laurel hedge parallel to the sideboard wall to create privacy;
 - An oleander planted at the edge of the alley;
 - One or more citrus trees planted here and there in the garden;
 - Climbing plants on the south wall (roses);
 - Agave in a pot.

Pavilion F – Garden



Pavilion E – View of the garden from the loggia

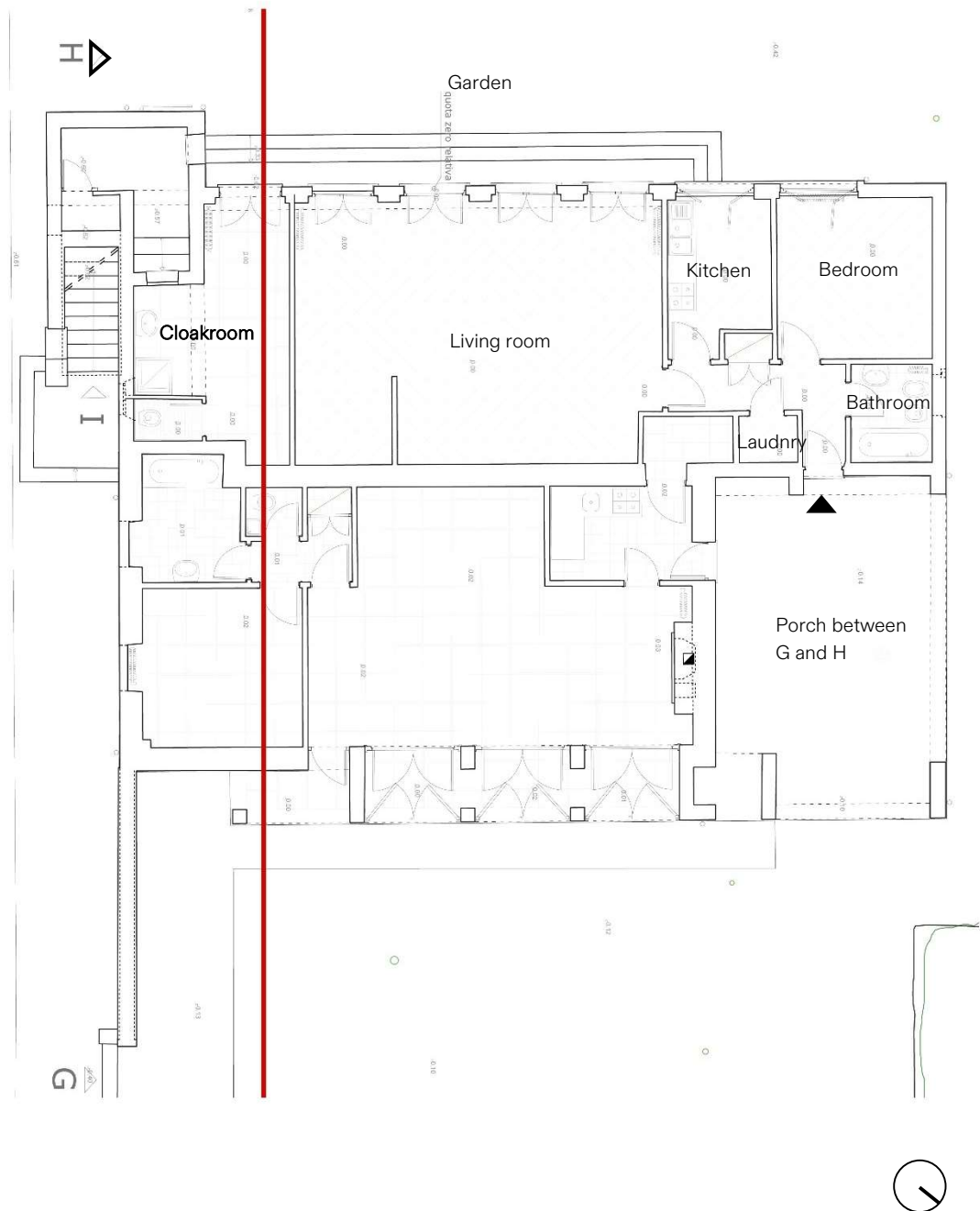


4. Description of the types and uses of the end pavilion "G-H-I "

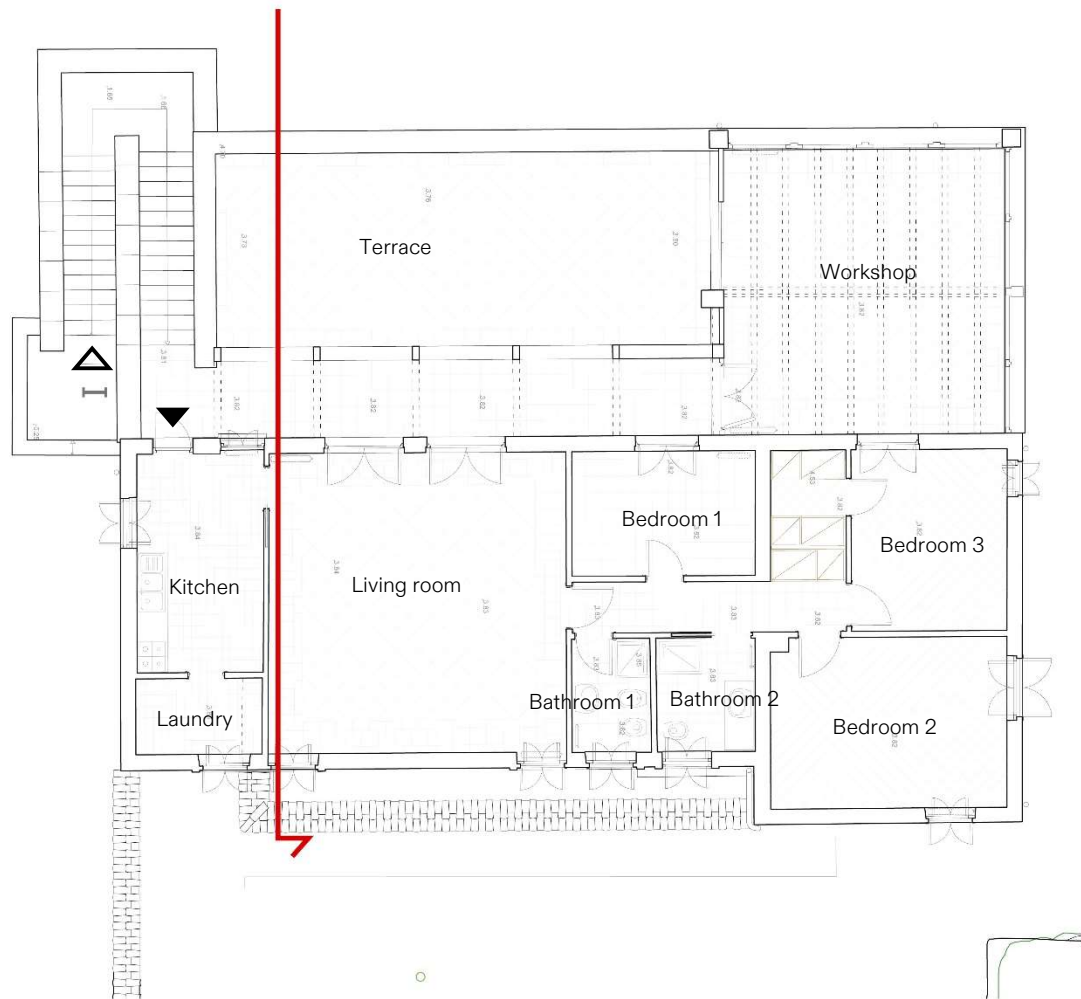
The end house consists of three dwellings:

- G follows the same principle described above;
- H is located above pavilion G and has a terrace;
- I is on the ground floor, adjoining pavilion G and below the terrace of pavilion H, and has a large garden.

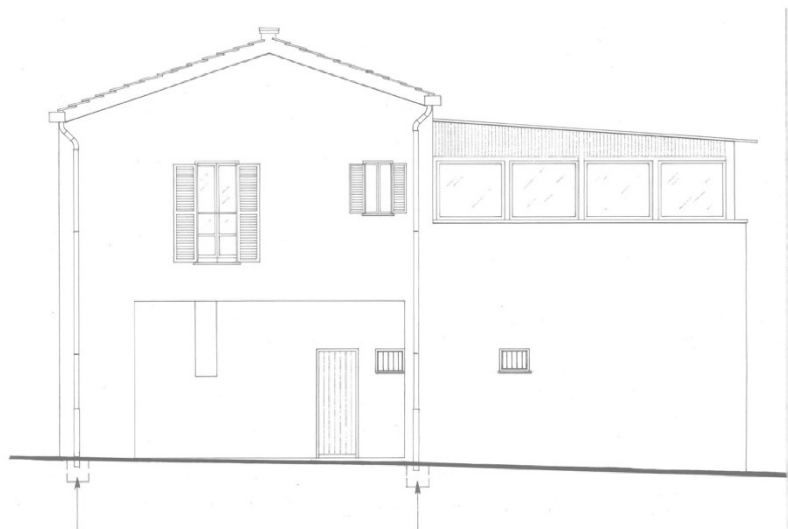
Ground floor plan of the end pavilion (pavilions H and G).
Survey 2025. Scale 1:150.



Floor plan of the end pavilion (pavilion I).
Survey 2025. Scale 1:150.



South elevation of the end pavilion (pavilions H and I).
West elevation of the end pavilion.
Surveyed in 2002. Scale 1:150.



North elevation of the end pavilion (pavilions G and I).
East elevation of the end pavilion.
Surveyed in 2002. Scale 1:150th.



End pavilion – View of apartments I on the ground floor and H on the first floor



End pavilion – View from the Porta Pinciana road



4.1. Pavilion G

Pavilion G is similar to the one described above, with a few variations: it does not have high windows in the kitchen and has a laundry room adjoining the kitchen. Following the extension of pavilion H on the upper floor, pavilion G shares with pavilion I a covered outdoor space on the west gable, which serves as an entrance to the kitchen. The original features of Pavilion G are listed in the previous paragraph.

4.2. Pavilion H

Pavilion H is located above pavilions G and I. This pavilion has undergone several extensions compared to the original project: an extension to create bedrooms two and three, then an extension to create a workshop. It is accessed via an external staircase with two flights leading to the terrace.

The following elements are from the original Jacques Carlu project:

- Most of the perimeter walls and partitions (the west bedroom and the glass workshop, however, are the result of subsequent extensions);
- Terrace, portico, and masonry parapet.

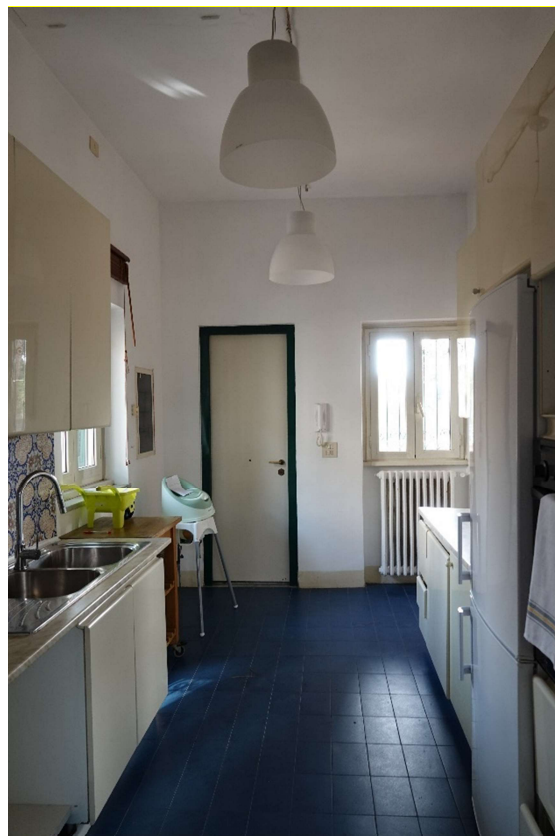
Kitchen and adjoining laundry room

- Use: entrance to the pavilion, meal preparation and laundry room.
- Surface area: 15 m²
- Main dimensions: Work surface length 4.40 m / ceiling height 3.20 m.
- Flooring: The floor is blue tile.
- Wall and ceiling coverings: The kitchen backsplash is made of patterned ceramic tiles. The laundry room is partially covered with white tiles. The horizontal and vertical walls are painted white.
- Natural lighting: one west-facing window and one south-facing window.
- Artificial lighting: One light fixture suspended from the ceiling.
- Furniture:
 - A large refrigerator;
 - An oven;
 - A dishwasher;
 - A gas stove;
 - A range hood;
 - Two sinks with stainless steel drainers;
 - Laminate countertop;
 - Laundry room: washing machine, laundry sink, two hot water tanks.
- Technical elements to take into account:
 - Electricity meter;
 - Intercom;
 - Radiator;
 - Hot water tanks (laundry room).

Pavilion H – Kitchen



Pavilion H – View of the entrance



Living room

- Use: living room, workspace, dining room.
- Surface area: 35 m²
- Main dimensions: Ceiling height 3.20 m.
- Flooring: The living room floor is covered with square terracotta-effect stoneware tiles laid diagonally, with a rectangular tile border around the perimeter.
- Wall and ceiling coverings: The walls and ceiling are solid white, with wooden baseboards. The frames and interior doors are painted yellow-white.
- Natural lighting:
 - Two French doors at ground level with the terrace facing southwest (height 2.26 m);
 - Two small windows positioned at both ends facing northeast;
- Artificial lighting:
 - Three ceiling lights;
 - One floor lamp;
- Furniture included:
 - One sofa;
 - Two armchairs;
 - A coffee table;
 - A large dining table with seven chairs;
 - A chest of drawers from the Academy's collections;
 - A wardrobe from the Academy's collections;
 - A bookcase.
- Technical elements to be taken into account:
 - Mechanical roller shutter boxes protruding from the partition wall;
 - The WiFi socket;
 - Two radiators;
 - Telephone socket in the corner of the living room opposite the bathroom.

Pavilion H – Living room



© MOLAJOLI



© MOLAJOLI

Hallway

- Use: access to two bathrooms and three bedrooms. Full-height closet storage and overhead storage in the false ceiling above the bathrooms.
- Surface area: 3.5 m²
- Main dimensions: Ceiling height of 3.20 m.
- Flooring: The flooring is the same as in the living room, but the tiles are laid in parallel with the walls. There is also a dark wood baseboard, as in the living room.
- Wall and ceiling coverings: The walls and ceiling are painted white.
- Natural lighting: No natural lighting.
- Artificial lighting: One ceiling light.
- Technical elements to consider: Internet box.

Bathroom 1

- Use: Small bathroom with shower cubicle.
- Surface area: 3.50 m²
- Flooring: The floor is tiled. A frieze and white tiles at a 45° angle cover the walls up to the ceiling.
- Wall and ceiling coverings: The walls and ceiling are painted white.
- Natural lighting: A northeast-facing window and the glass entrance door.
- Artificial lighting:
 - A ceiling spotlight;
 - A wall light above the mirror.
- Furnishings:
 - A ceramic pedestal sink;
 - A mirror;
 - A floor-mounted toilet with a high flush;
 - A bidet;
 - A 70cm x 70cm shower cubicle.

Bathroom 2

- Use: large bathroom with shower cubicle.
- Surface area: 9 m²
- Flooring: The floor is made of the same terracotta tiles as in the living room, but the tiles are laid in squares parallel to the walls. There is also a dark wood baseboard, as in the living room.
- Wall and ceiling coverings: The walls and ceiling are painted white.
- Natural lighting: A northeast-facing window and the glass front door.
- Artificial lighting:
 - Four spotlights on the ceiling;
 - One wall light above the mirror.
- Furnishings:
 - A built-in ceramic sink;
 - A base cabinet;
 - A floor-mounted toilet;
 - A large mirror;
 - A storage cupboard;
 - A 70 cm x 85 cm shower cubicle.
- Technical elements to consider:
 - An electric towel dryer.

Pavilion H – Hallway 1



© MOLAJOI

Bedroom 1

- Use: children's bedroom.
- Surface area: 9 m²
- Flooring: The living room floor is covered with square terracotta-effect stoneware tiles laid diagonally, with a border of rectangular tiles around the perimeter.
- Wall and ceiling coverings: The vertical and horizontal walls are painted white.
- Natural lighting: a south-west facing double door window onto the terrace portico.
- Artificial lighting:
 - One ceiling light;
 - A bedside lamp;
 - One floor lamp.
- Furniture provided:
 - Single bed 90cmx200cm;
 - A bookcase;
 - A desk;
 - One chair;
 - One bedside table.
- Technical elements to consider:
 - A radiator under the window;
 - A ventilation grille;
 - A protruding mechanical roller shutter box.

Bedroom 2

- Use: children's bedroom.
- Surface area: 16 m²
- Flooring: The floor consists of 20x20 cm terracotta tiles laid diagonally without joints.
- Wall and ceiling coverings: The vertical and horizontal walls are painted white.
- Natural lighting:
 - A double French window facing ~~northwest~~ northeast, with a guardrail;
 - A window facing northeast.
- Artificial lighting:
 - One ceiling light;
 - A bedside lamp.

- Furniture:

- Single bed 90 cm x 200 cm;
- A storage unit and wardrobe;
- A desk;
- A chair;
- One bedside table.

- Technical elements to take into account:

- A radiator under the window.

Pavilion H – Bedroom 1



© MOLAJOLI

Pavilion H – Bedroom 2



© MOLAJOLI

Bedroom 3

- Use: bedroom for two people with dressing room.
- Surface area: bedroom 11 m² / dressing room 2.7 m².
- Flooring: The floor is made of 20x20 cm terracotta tiles laid diagonally without joints.
- Wall and ceiling coverings: The vertical and horizontal walls are painted white except for the northeast wall, which is dark gray.
- Natural lighting:
 - A double French door opening onto the workshop;
 - A window facing northeast.
- Artificial lighting:
 - A ceiling light;
 - Two bedside lamps.
- Furniture:
 - Double bed 160 cm x 200 cm;
 - One low storage unit;
 - Two bedside tables.
- Technical elements to take into account:
 - A radiator under the window;
 - A mechanical roller shutter box protruding from the partition wall.

Pavilion H – Bedroom 3



© MOLAJOLI

The workshop

- Use: extension to create a workshop.
- Surface area: 33 m².
- Flooring: The flooring is the same as in the hallway.
- Wall and ceiling coverings: The wall against bedroom 3 and the base corresponding to the terrace railing are painted white, the other walls are exposed wood.
- Natural lighting:
 - Eight square windows facing southwest and northwest;
 - A double French door opening onto the terrace portico;
 - A double sliding glass door that opens onto the terrace.
- Artificial lighting:
 - One floor lamp;
 - One desk lamp.
- Furniture:
 - A sofa;
 - A coffee table;
 - A large desk;
 - Two chairs;
 - A bookcase;
 - A low storage unit.
- Technical elements to consider:
 - Two radiators;
 - Interior blinds.

Pavilion H – Workshop



© MOLAJOI



© MOLAJOI

The terrace

- Use: domestic, dining, play area.
- Surface area: 68 m².
- Flooring: The flooring is terracotta.
- Wall covering: Portico and parapets in coated masonry, a section of brick parapet. One wall is made of wood.
- Natural lighting: South-west facing.
- Artificial lighting:
 - Sphere-shaped wall;
 - Spotlights on pole brackets.
- Furniture provided:
 - One table;
 - Two benches;
 - One parasol;
 - Two folding deck chairs.

Pavilion H - Terrace



© MOLAJOLI



© MOLAJOLI

4.3. Pavilion I

Pavilion I is attached to Pavilion G and located below Pavilion H. This pavilion and its garden face southwest. It can be accessed either from the porch shared with Pavilion G to the north or from the garden via the driveway leading to Porta Pinciana.

The following elements are taken from the original Jacques Carlu project:

- The perimeter walls;
- The exterior steps;
- The floor of the cloakroom.

The living room

- Use: entrance hall, workspace, bedroom with single bed, living room.
- Surface area: 46 m²
- Main dimensions: Ceiling height of 3.26 m.
- Flooring: The floor is made of sandstone.
- Wall and ceiling coverings: The vertical and horizontal walls are painted white, except for the transverse partition, which has a coarse "droplet" finish. The frames, interior doors, and baseboards are painted blue-gray.
- Natural lighting: Four double French doors and a glass transom window facing and opening onto the south-west garden (height 2.50 m);
- Artificial lighting:
 - Three ceiling lights;
 - One floor lamp.
- Furniture:
 - One sofa;
 - Two armchairs;
 - A coffee table;
 - A large dining table with six chairs;
 - A chest of drawers from the Academy's collections;
 - A wardrobe from the Academy's collections;
 - A bookcase;
 - A desk;
 - A single bed;
 - A bedside table.
- Technical elements to be taken into account:
 - Mechanical roller shutter boxes protruding from the partition wall;
 - Two radiators;
 - Telephone socket in the corner of the living room next to the laundry room.

Cloakroom

- Use: Currently used as a cloakroom for gardeners, it is separated from Pavilion I by a wall.
- Flooring: Most of the flooring is original, consisting of white cement tiles with 20x20 cm marble granules framed by red terrazzo strips.
- Wall and ceiling coverings: The vertical walls are painted white and in some places are covered with white tiles.
- Natural lighting: Two tall windows facing west.
- Technical elements to consider:
 - Sloping ceiling due to the staircase;
 - Bathroom (shower, toilet, sink);
 - One radiator;
 - A protruding mechanical roller shutter box.

Pavilion I – Living room



© MOLAJOLI



© MOLAJOLI

Kitchen

- Use: meal preparation and side table.
- Surface area: 8.30 m2
- Flooring: The floor is made of 30x30 cm sandstone tiles, laid at a 45° angle to the walls.
- Wall and ceiling coverings: Half of the vertical walls are covered with white ceramic tiles and the other half with white paint.
- Natural lighting: One south-west facing window overlooking the garden.
- Artificial lighting: One ceiling light.
- Furniture:
 - Base and wall units;
 - Gas and electric oven;
 - Four-burner gas stove;
 - Dishwasher;
 - Range hood;
 - Two sinks with stainless steel drainer;
 - Laminate countertop;
 - Side table;
 - Three Mallet-Stevens chairs from the Academy Collection;
 - Large refrigerator;
 - Shelves.
- Technical elements to be taken into account:
 - Mechanical roller shutter boxes protruding from the partition wall;
 - Two radiators;
 - Telephone socket in the corner of the living room next to the laundry room.

Laundry room

- Flooring: The floor is covered with black tiles.
- Wall covering: The laundry room has white tiles on the wall where the washing machine and sink are located.
- Furnishings:
 - A washing machine;
 - A sink;
 - A domestic hot water tank.

Pavilion I – Kitchen



© MOLAJOI

Hallway

- Use: Entrance from the porch, leading to the bedroom, bathroom, kitchen, laundry room, and living room. Full-height closet built into the partition wall.
- Surface area: 12 m²
- Flooring: The floor is made of 30x30 cm sandstone tiles, laid at a 45° angle to the walls of the pavilion.
- Wall and ceiling coverings: The vertical and horizontal walls are painted white. The frames, interior doors, and baseboards are painted blue-gray.
- Artificial lighting: One light fixture on the ceiling.

Bathroom

- Use: bathroom with toilet.
- Surface area: 3.7 m²
- Flooring: The floor is covered with black tiles.
- Wall and ceiling coverings: White ceramic tiles cover the walls to a height of approximately 2.20 m. The vertical and horizontal walls are painted white.
- Natural lighting: A single-pane window facing northwest.
- Artificial lighting:
 - One light fixture on the ceiling;
 - A wall light above the mirror.
- Fixtures:
 - A wall-mounted ceramic sink;
 - A floor-mounted toilet;
 - A bidet;
 - A wall-mounted cabinet with mirrored doors;
 - A bathtub;
 - A cast iron radiator.

Pavilion I – Bathroom



© MOLAJOLI

The bedroom

- Use: bedroom with double bed.
- Surface area: 12 m2
- Flooring: The floor is made of 30x30 cm sandstone tiles, laid at a 45° angle to the walls of the pavilion.
- Wall and ceiling coverings: The vertical and horizontal walls are painted white.
- Natural lighting: A three-panel window facing southwest.
- Artificial lighting:
 - One ceiling light;
 - Two bedside lamps.
- Furniture:
 - One double bed (160x200cm);
 - One wardrobe;
 - Two bedside tables.
- Technical elements to take into account:
 - Protruding mechanical roller shutter box;
 - One radiator;
 - A pipe in the upper part (see photograph).

Pavilion I – Bedroom



© MOLAJOLI

Garden

- Use: domestic space, clothes drying, outdoor dining, workspace, children's play area.
- Surface area: 110 m²
- Main dimensions: Porch with three steps.
- Flooring: Travertine walkway.
- Natural lighting: South-west facing.
- Artificial lighting: Motion-detector wall light above the entrance door.
- Furnishings: One wooden table and two benches.
- Plantings:
 - A laurel hedge forming the fence;
 - An oleander planted at the edge of the alley;
 - An avocado tree at the front of the property.

Pavilion I – Bedroom



© MOLAJOLI

VILLA MEDICI

ACADÉMIE DE
FRANCE À ROME